

# SUSTAINABLE AGRICULTURE IN THE Y-K DELTA

Be kind to the planet.  
Support local farms.





---

**HIGHLY FERTILE**  
In the world's breadbaskets, mild temperatures and adequate rainfall help sustain exceptionally productive soils, ideal for annual crops.

**HIGHLY FERTILE AT RISK**  
These naturally fertile soils are vulnerable to human mismanagement, which can lead to compaction, erosion, and desertification.

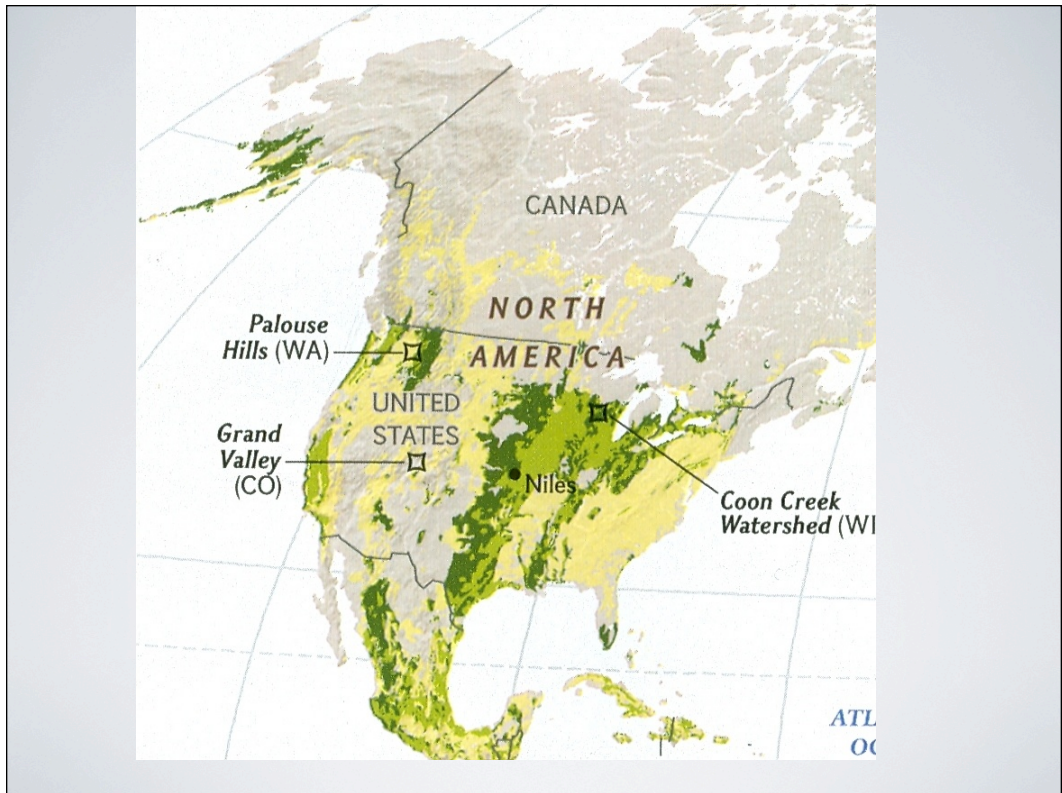
**MARGINAL**  
Soils here are on the cusp, with agricultural productivity largely dependent on human choices: People can either nurture the soil or degrade it.

**HIGHLY FERTILE**  
In the world's breadbaskets, mild temperatures and adequate rainfall help sustain exceptionally productive soils, ideal for annual crops.

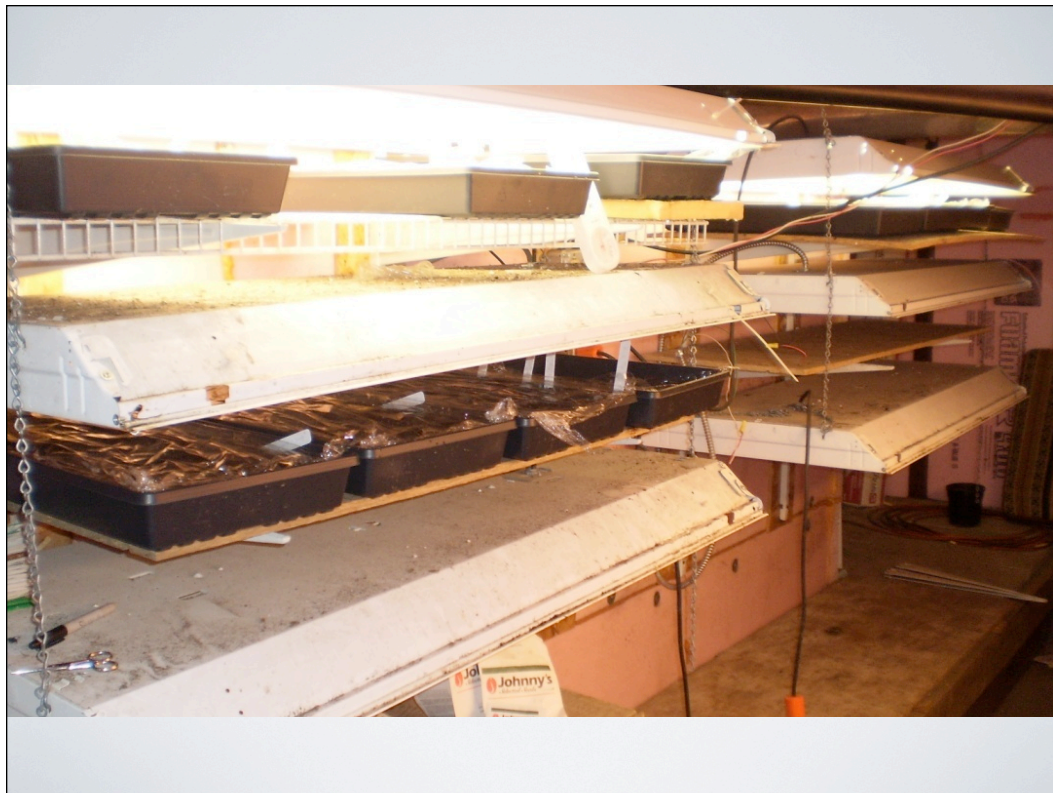
**HIGHLY FERTILE AT RISK**  
These naturally fertile soils are vulnerable to human mismanagement, which can lead to compaction, erosion, and desertification.

**MARGINAL**  
Soils here are on the cusp, with agricultural productivity largely dependent on human choices. People can either nurture the soil or degrade it.

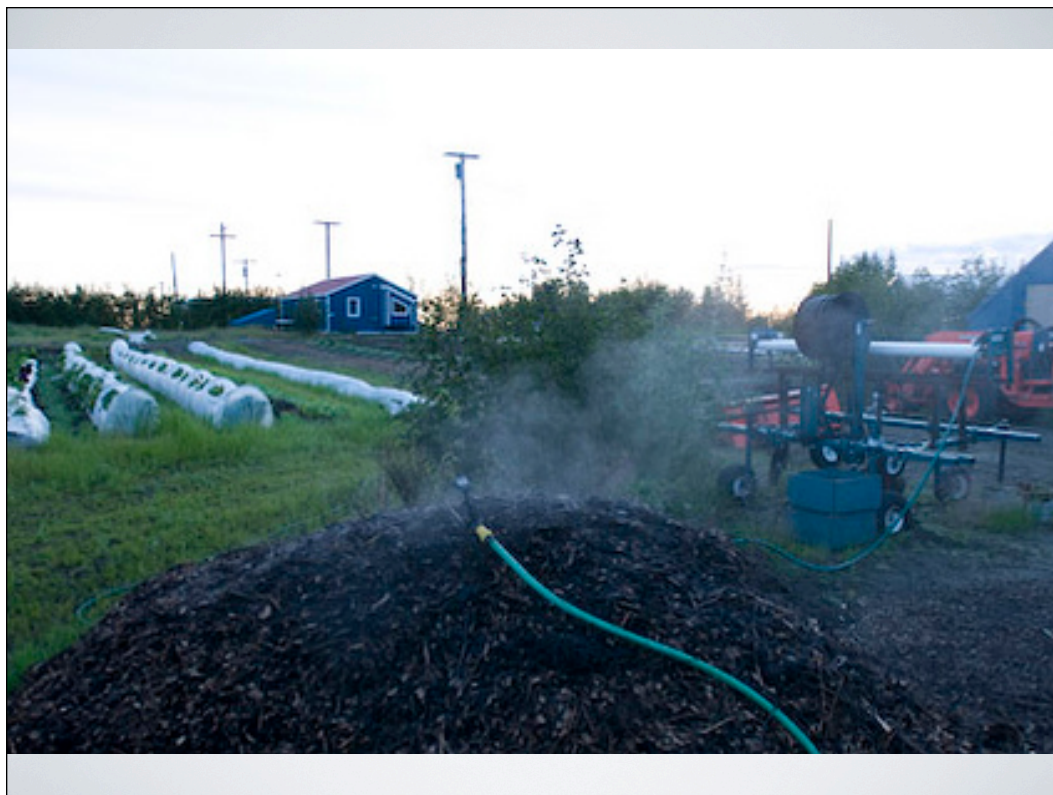






















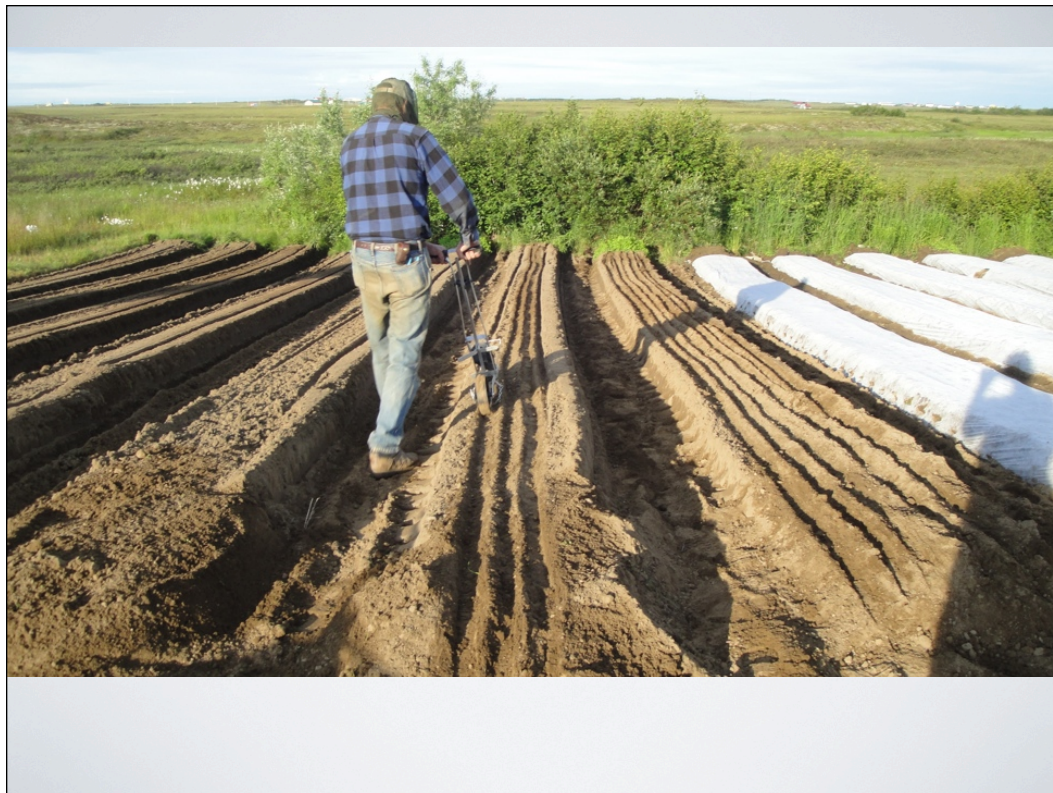
















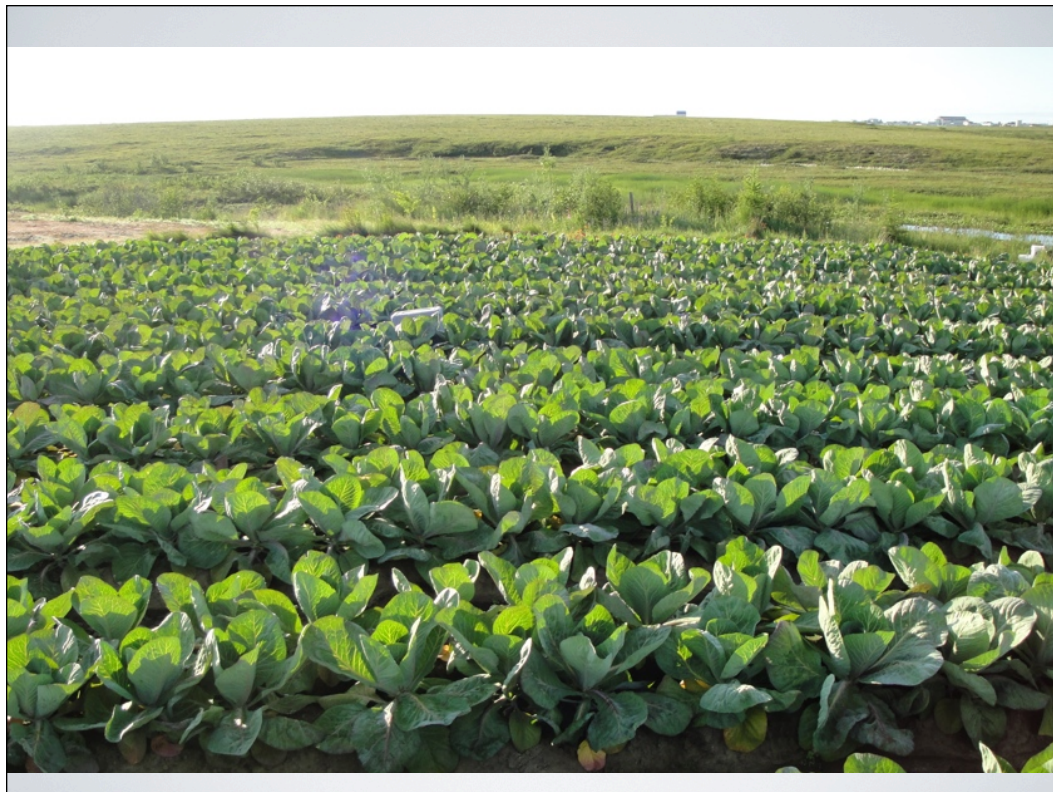
























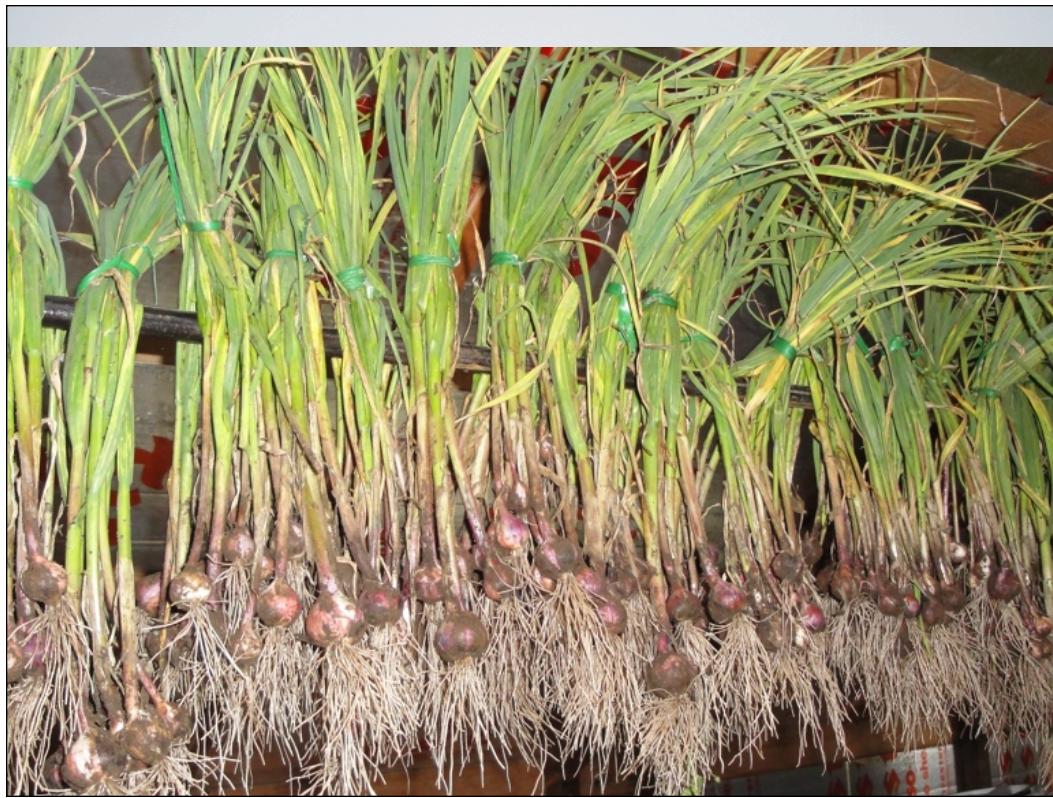






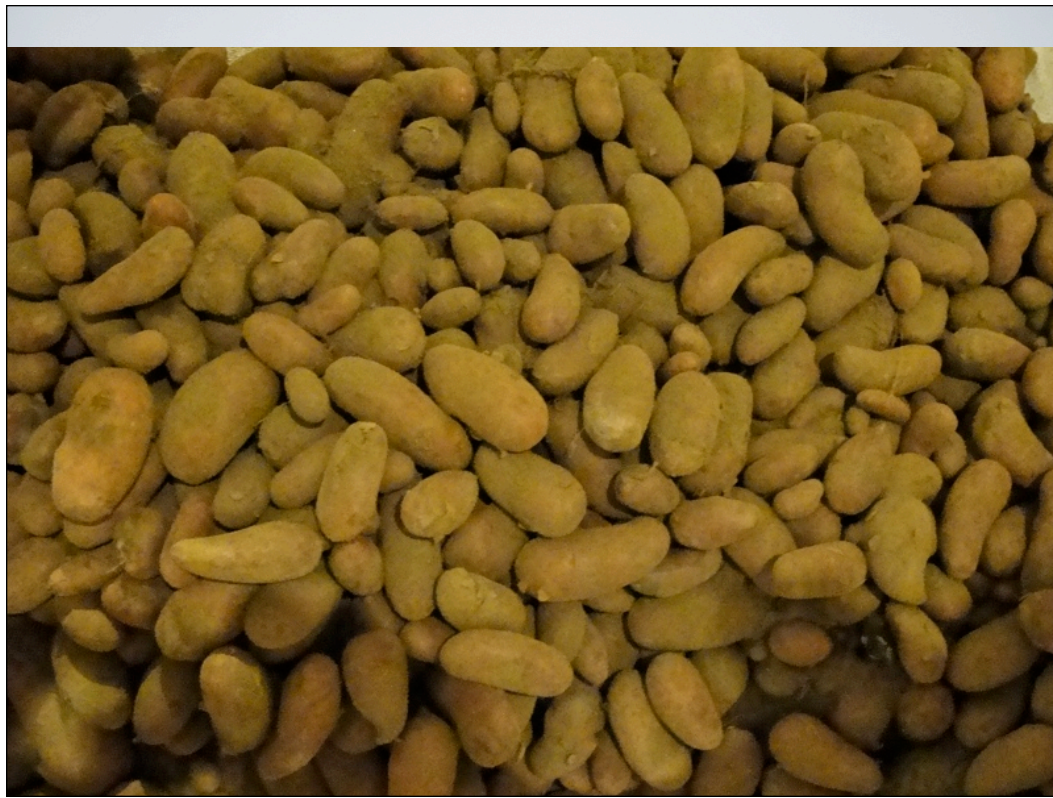
















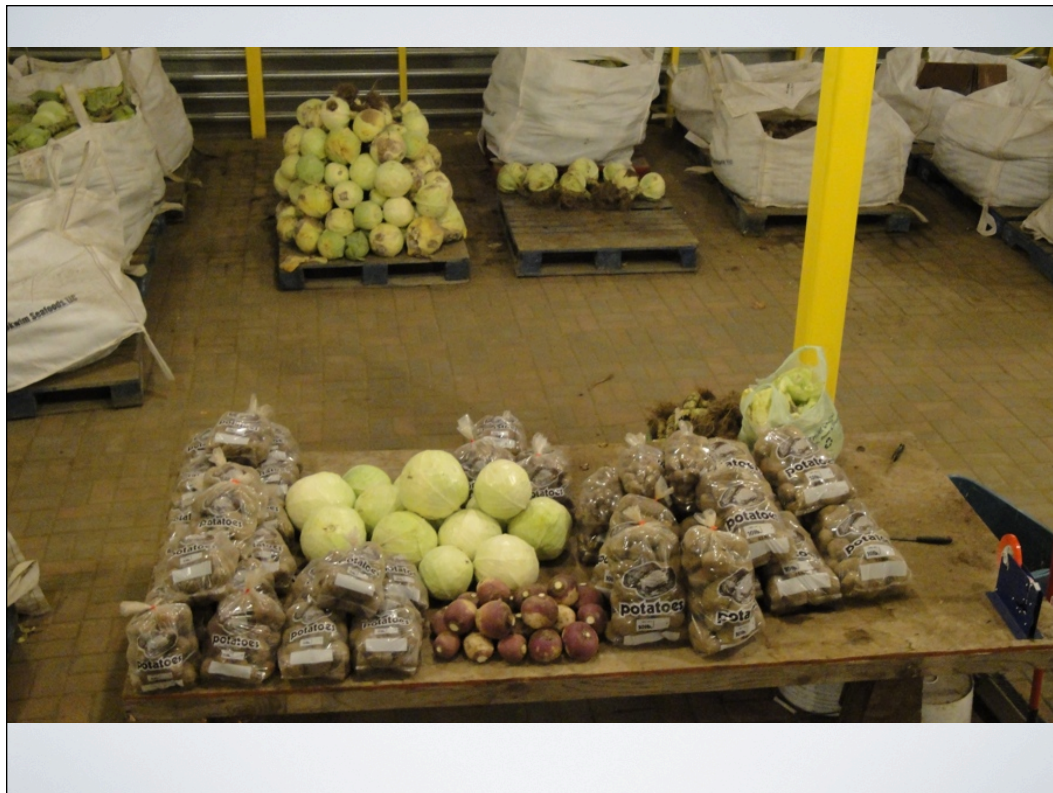












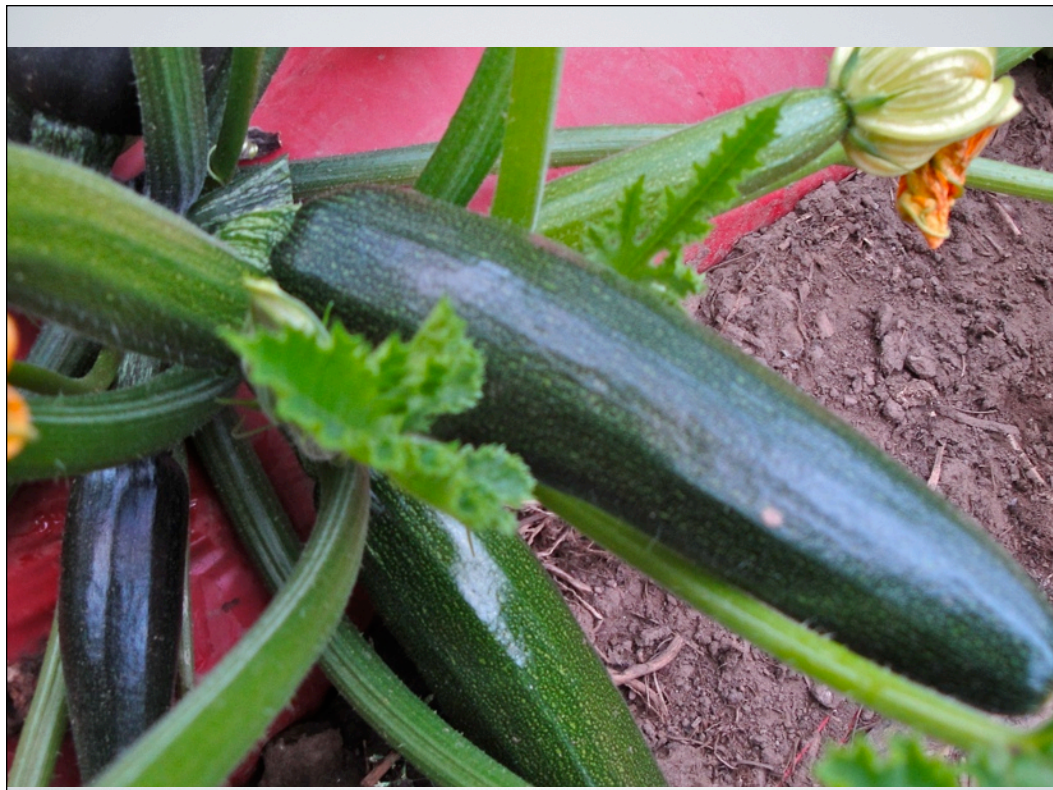




















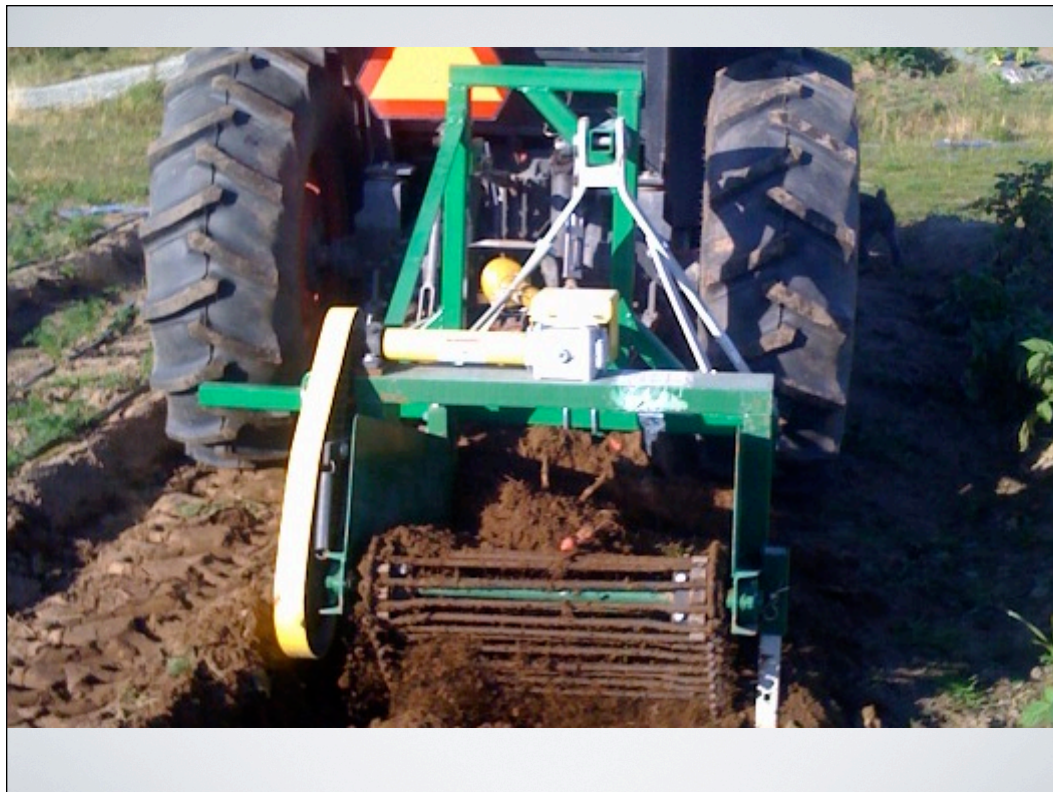


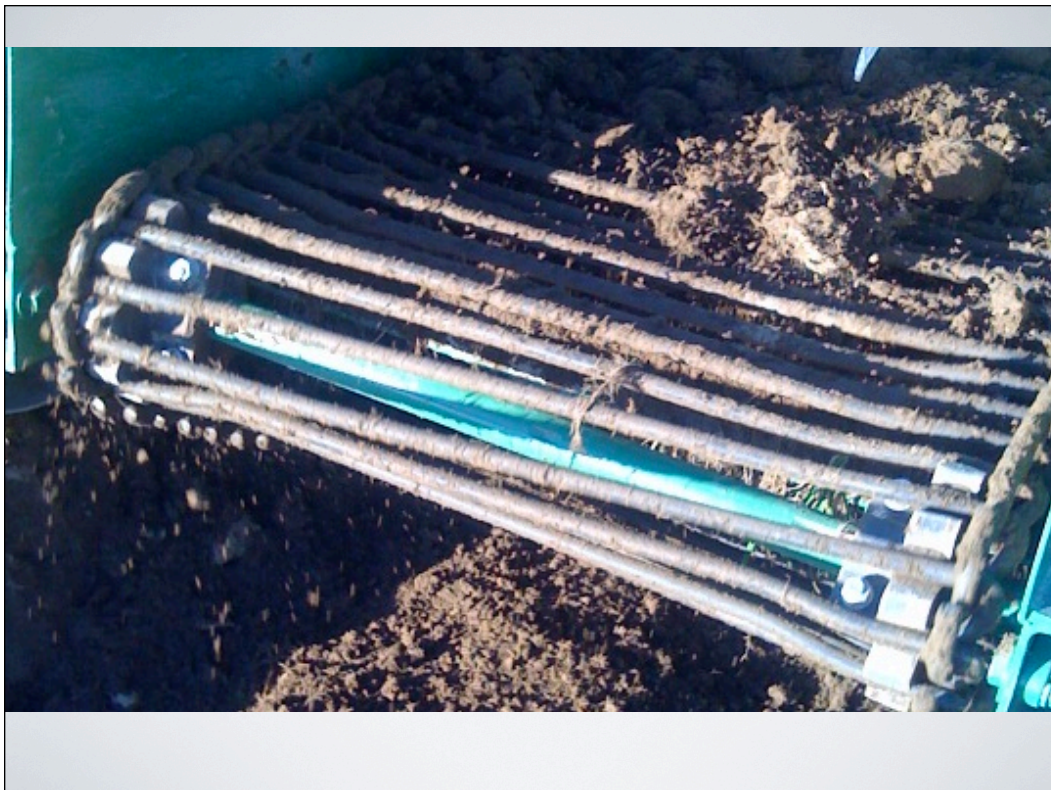








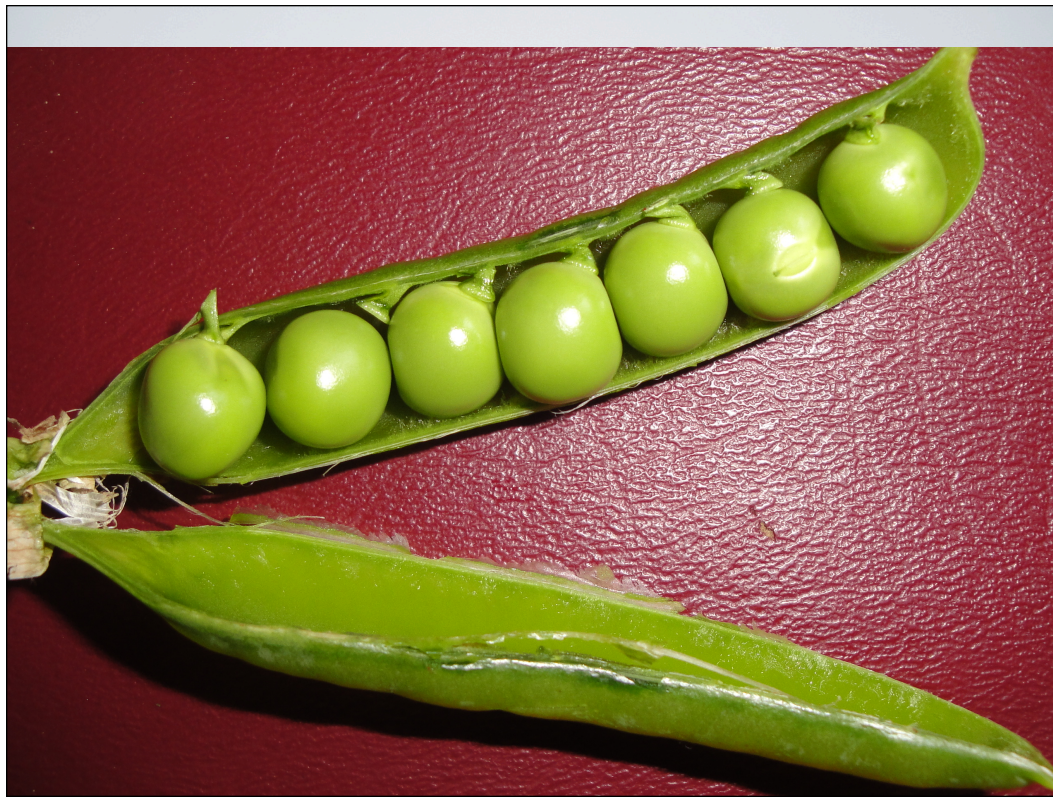








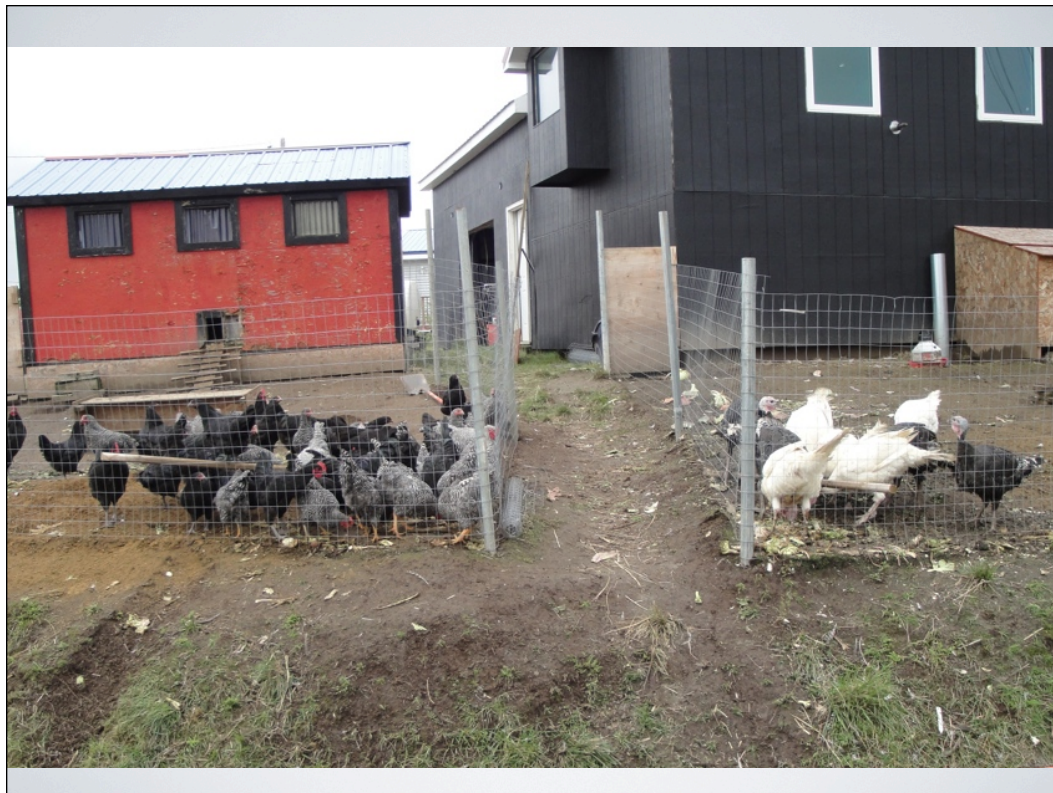


























QUESTIONS